



A7Tornado™

Multi-Purpose Regenerative Air Sweeper

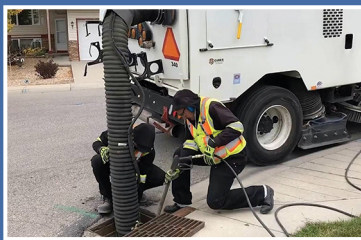


*Sweepers shown with optional equipment

NON-STRUCTURAL BEST MANAGEMENT PRACTICES:



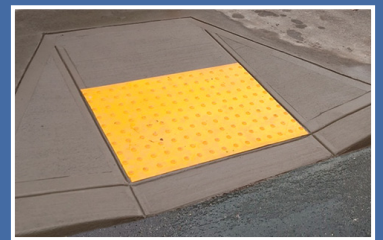
VACUUM AND BRUSH
REMOVAL OF DEBRIS



CATCH BASIN CLEANING
OF DEBRIS AND POLLUTANTS



POWERFUL MAGNET TO
COLLECT FERROUS MATERIAL



HIGH PRESSURE WASHDOWN
TO CLEAN ADA RAMP

Your Schwarze Dealer.

A FAMILY COMPANY SINCE 1967



Bortek
INDUSTRIES, INC.

WE KNOW CLEAN 

800.626.7835  BORTEKINDUSTRIES.COM

Street sweeping is a best management practice (BMP) that can serve the entire community. With catch basin cleaner equipped you can go to work immediately after purchase as opposed to structural BMPs like storm ponds that only serve a dedicated area and require engineering and construction. This makes sweeping the most cost effective BMP per impervious acre treated [King, Hagen, 2011]



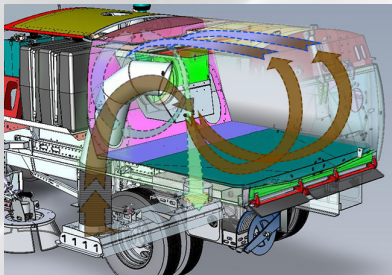
MADE IN THE USA



A7 Tornado™ 8.4 Cubic Yard Multi-Purpose Regenerative Air Sweeper

Effective January of 2017, the EPA Final MS4 General Permit Remand Rule requires “clear, specific, and measurable permitting” conditions for measuring BMP implementation. In addition, MS4s that discharge to impaired waters must develop a total maximum discharge limit (TMDL) strategy and plan to reduce sediment, phosphorous, and nitrogen discharged into protected watersheds. The new ruling also requires greater public participation in the NPDES permitting process.

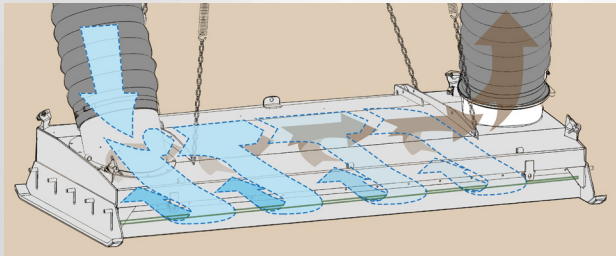
Schwarze regenerative air technology makes use of both positive pressure and vacuum airflow, this maintains the compressed air in a sealed loop and is not returned to the atmosphere like traditional vacuum sweepers.



Regenerative Air Technology

Regenerative air sweepers generally only need 100KW to do the same amount of work as pure vacuum sweepers with 200KW.

The blast and recovery cycle continues indefinitely with no air leakage.



Pressurized air is forced across an “air knife” approximately 2.5 meters wide across the sweeping head. This scrapes the roadway surface with a sheet of pressurized air, lifting dirt and debris off the pavement.

Schwarze and its global dealer network understands your challenges and helps stormwater managers meet these conditions while being good stewards of taxpayer dollars.



We make sure the correct features are included to optimize municipal sweeping programs such as:

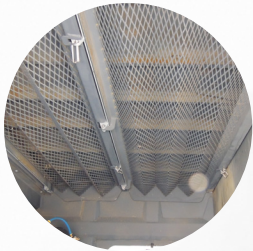
- Reducing trips to the landfill so you can continue working and keep earning credits.
- Catch basin suction hoses with high pressure water.
- Telematics for integration with your GIS system to document work for compliance and show citizens that their streets and catch basins have been cleaned.

A7 Tornado™ Multi-Purpose Regenerative Air Sweeper



Up to 144" Sweep Width

40" Dump Height



Large Saw-Tooth Increased Hopper Screen Design



Powerful Height Adjustable, Cab Controlled Self-Dumping Front Magnet

High Pressure Water Spraygun



CAN-Bus Control Panel with Backlit Switches, Text and Icons



44" Recessed Gutter Brooms with Shielded Broom Motor



Heavy Duty Catch Basin Vacuum Hose with Hand Controls

Backup Camera

Bolt-On Tubes

Sweepers are also a great traveling billboard. We work with your program to design wraps that promote "clean streets, clean stream" initiatives, or our popular "only rain in the storm drain" promotion.



Shown with optional 615 gallon water system



Tim Kukovica
Tim's Water Service,
St. Catharines, Canada

"We started with Schwarze back in the early 2000s and we now have four A7 Tornado sweepers. I like Schwarze equipment, it's not over-complicated equipment, the systems are easy. When we have a breakdown it's easy to fix with North American parts, next day shipping, great customer service, it's beautiful."

Additional Available Regenerative Air Sweepers:

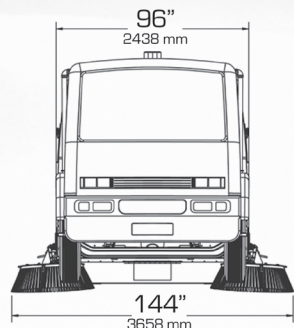
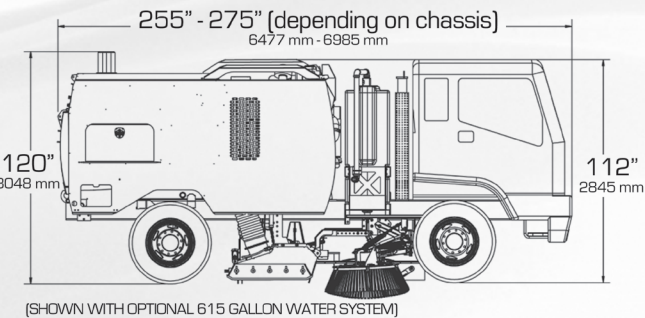


For More Information Visit

WWW.SCHWARZE.COM/STORMWATER

*Ask us about our optional:





*TYPICAL MEASUREMENTS SHOWN, EXACT DIMENSIONS DEPENDING ON OPTIONS AND TRUCK MANUFACTURER

SWEEPING PATH	
Pickup head only	90 in (2286 mm)
Head and 1 broom	117 in (2972 mm)
Head and 2 brooms	144 in (3658 mm)

CHASSIS	
Mounts on various chassis to meet requirements	

SWEEPER BODY	
Construction	Welded 10-gauge stainless steel plate
Safety props	Lift spacers

STANDARD ENGINE	
Model/type	4045T in-line 4 cylinder
Aspiration	Tier 4 Final turbo-charged diesel
Manufacturer	John Deere
Displacement	275 cu in. (4.5 L)
Brake horsepower	134 hp (100 kw) @ 2400 rpm
Torque	398 ft lb (540 Nm) @1600 rpm
Air cleaner element	Centrifugal precleaner; dry type with safety and restriction indicator
Oil filter	Full-flow/spin-on
Stroke	5 in (127 mm)
Bore	4.20 in (106 mm)
Compression ratio	19 to 1
Safety shutdown	Three-point automatic
Throttle control	Electronic

SWEEPER ELECTRICAL SYSTEM	
Voltage	12 V
Engine alternator	90 amp

DUST CONTROL SYSTEM	
Type	High pressure/low volume
Capacity	250 gallon (946 L)
Tank construction	Polyethylene filter; 50 mesh; cleanable
Fill diameter	2.5 in (63.5 mm)
Fill hose	25 ft (7620 mm)
Controls	Electric; in-cab
Nozzles	2 on each broom; 5 around suction head; 2 inside suction nozzle; 2 on front axle; 2 inside hopper
Water level gauge	In-cab

INSTRUMENTATION	
Auxiliary engine	Flat panel display; tachometer; hourmeter; voltmeter; temperature gauge; oil pressure gauge; warning icons

FAN SYSTEM	
Type	Closed-face radial
Drive	Direct via 5 groove; banded power belt
Construction	Hardox steel
Balance	1.5 grams on 2 sides
Diameter	32.75 in (832 mm)
Housing lining	Bolt-in corded rubber
Mounting	2 regreasable sealed bearings
Vacuum enhancer	For heavy/light material; in-cab indicator

PICKUP HEAD	
Type	Dual chambered full-width blast orifice
Operating direction	Forward and reverse
Suspension	Adjustable spring balanced
Length	90 in (2286 mm)
Pressure hose diam	14 in (355.6 mm)
Suction hose diam	14 in (355.6 mm)
Hose construction	3/8 in (9.5 mm) wire-reinforced molded rubber
Head area	3240 sq in (20903 sq cm)
Controls	Hydraulic raise and lower
Skids	Double wide tungsten carbide
Construction	Abrasion-resistant steel inlet and outlet transitions.

SIDE BROOMS	
Type	Vertical steel digger
Location	Right; left; forward of pickup head
Diameter	44 in (1118 mm)
Drive	Hydraulic
Suspension	Torque-sensing spring
Wear adjustment	Automatic
Pressure	Manual
Speed	Variable; non-reversing
Segments	5 each side; disposable
Tilt angle adjustment	In-cab controls

DEBRIS HOPPER	
Volumetric capacity	8.4 cu yd (6.4 cu m)
Usable Capacity	7.0 cu yd (5.4 cu m)
Dump angle	51 degrees
Floor angle	3 degrees
Lifting	Twin hydraulic cylinders
Hopper dump door	Hydraulic open, close, lock
Inspection doors	1 on each side, pressure vessel lock
Hopper dump height	40 in (1016 mm)
Debris screens	Sawtooth drop down

HYDRAULIC SYSTEM	
Type	Dual output 2 section
Pump capacity	8 gpm @ 1800 rpm (30 lpm) per section for 16 gpm total
Drive	Direct gear
Maximum pressure	2750 psi (190 bar)
Reservoir	25 gal (94 L)
Filter	10 micron; spin on
Protection	Pressure relief valve
Controls	Electro-hydraulic

AUXILIARY HYDRAULIC SYSTEM	
Type	Gear type; driven by electric motor
Function	Lower hopper; open/close hopper door; raise brooms and pickup head

PAINT	
One coat of sealer/primer and two coats of in standard white color.	
Paint	White; Sherwin Williams Genesis G2 #100268977

OPTIONAL SWEEPER EQUIPMENT	
Special Paint	
Front Mounted Magnet Bar	
Amber Beacon	
Strobe Light Kit	
Arrowboard Kit	
Additional Flood Lights	
Hopper Hand Hose	
Remote Drop Down Screens	
Hopper Dump Assist Shaker	
12-volt Auxiliary Hydraulic System	
Dual Steeling and Controls	
Extra Water	
High Pressure Front Spraybar	
High Pressure Wash Dow	
Side Air Blast Head	
Hopper Deluge	
Head Drain	
Dual Outside Hopper Controls	
Lifetime Hopper Warranty	
Short Wheelbase Chassis	

Note: Design and specifications subject to change without notice.



© 2022 Schwarze Industries
1055 Jordan Road
Huntsville, AL 35811
800.879.7933
An Alamo-Group Company