

BROUGHT TO YOU BY

Proteus
NORTH AMERICAN
DISTRIBUTOR

A FAMILY COMPANY SINCE 1967



Proteus

MEET THE PROTEUS LINEUP



CRP300

RELIABLE IN
CHALLENGING
CONDITIONS

PIPE SIZES from 12"

CRP140

SOPHISTICATED MID-SIZE CRAWLER

PIPE SIZES from 6"

CPL150

ENTRY LEVEL MID-SIZE CRAWLER

PIPE SIZES from 5.5"

CRP90

MASSIVE CAPABILITIES, SMALL DESIGN

PIPE SIZES from 3.5"

STANDARD FEATURES



6 PIN CONNECTOR



AUTOMATIC ELEVATOR



BUILT IN INCLINOMETER



BUILT-IN LOWERING ARM



QUICK CHANGE WHEEL LOCK



SOFT RUBBER WHEELS



BUILT-IN MULTI-FREQUENCY SONDE

EXPAND YOUR INSPECTION CAPABILITIES

CRAWLER CRADLE

- Compatible with CRP140 and CPL150 Crawler, all motorized and manual cable reels
- Robust, steerable 4-wheel drive
- Comes with 8" pneumatic wheels
- Adjustable high speed and high torque drive settings
- Attaches in under 3 minutes

UNIQUE GEAR SELECTOR



PCC01
Crawler Cradle

PCC01 Crawler Cradle
in action with **CRP140**

**CENTERS
IN PIPES
42"**

CAMERA ELEVATION PLATFORM

This telescopic elevator quickly attaches to the CRP300 Crawler and can be manually moved up or down to increase inspection capabilities in pipes 40 to 87"

CEP300



**CENTERS
IN PIPES UP
TO 87"**

CRAWLER WHEELS

QUICK RELEASE LOCK

Proteus crawlers feature a unique, patented wheel lock device. Change the crawler wheel type to suit the size and condition of the pipe. Using an Allen wrench, changing the wheelset is quick and simple with no other tools required.



12-18"



8-12"



6-8"



4"

SOFT BLACK RUBBER

Black, soft rubber tires developed to provide improved traction in regular pipes. Available in four sizes and Wide Axle

FOR
CONCRETE
& HEAVY
DEBRIS



12-18"



8-12"



6-8"

HIGH GRIP

Hard wearing carborundum manufactured with a deep bevel profile to provide improved traction in wet and greasy pipes. Available in three sizes and Wide Axle for CRP90

FOR WET
& GREASY
PVC PIPES



12-18"



8-12"



6-8"



4"

CARBIDE

Fragmented copper particles fused to a heavy duty stainless steel body. Available in four sizes and Wide Axle for CRP90

FOR
CLAY
PIPES



10" +



18" +

PNEUMATIC BALLOON

Heavy duty tires designed to improve performance on our large Proteus CRP300 crawler. Optional for Crawler Cradle PCC01. Also available in Wide Axle

FOR
HEAVY
DEBRIS

WIDE AXLE WHEELS

Built-in, screwless spacers provide extra width for inspecting larger diameter pipes. Available in Soft Black Rubber, Carbide and High Grip.



PRECISION CAMERAS FOR OPTICAL EXCELLENCE

BUILT FOR LONGEVITY, THESE CAMERAS ARE RUGGED AND PRECISE. SECURED BY A ROBUST CONNECTOR, AND ENGINEERED TO EXCEED YOUR OPTICAL STANDARDS.

CAM027

AXIAL CAMERA

Robust camera head with 3 ultra-bright LED light clusters for optimum illumination and scratch resistant sapphire glass.



CAM025

SELF LEVELING AXIAL CAMERA

Stainless steel housing features 4 ultra-bright LED lights and scratch resistant sapphire glass.



CAM026

PAN & ROTATE

Continuous 360° rotation and $\pm 135^\circ$ pan. Dual clusters of 3 ultra-bright LED lights.



CAM026L

PAN, ROTATE & LASER

Continuous 360° rotation and $\pm 135^\circ$ pan. Standard distance sensor and twin visible lasers to enable accurate pipe diameter, defect and object measurement.



CAM028L

PAN, ROTATE, ZOOM & LASER

Optical and digital zoom function to view distant objects in much greater detail. Continuous 360° rotation and $\pm 135^\circ$ pan. Built-in twin lasers for accurate pipe diameter, defect, water level, and object.



BACK EYE CAMERAS & AUX LIGHT HEADS

ULTRA-BRIGHT LEDS FOR OPTIMUM ILLUMINATION



ALB300
Auxiliary Light
With Backeye Camera



ALN300
Auxiliary Light
Non-Backeye Camera

LIGHT HEADS

- Durable anodized aluminum casing
- Three ultra-bright LED lights
- ALB300 includes back eye camera to assist in reversing around obstructions.

LIGHT PODS

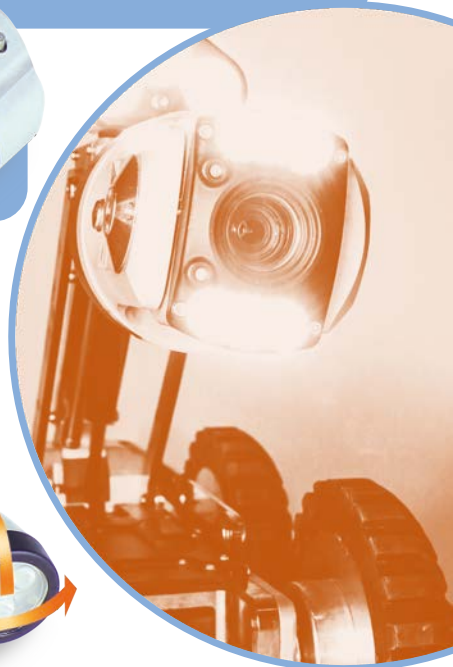
- Twin LED light pods built in to the auxiliary light head
- Manually adjustable with a 180° and 90° rotation.
- Compatible with all Proteus crawlers
- APB300 includes a back eye camera to assist in reversing around obstructions.



APB300
Auxiliary Pod
with Backeye Camera



APN300
Auxiliary Pod
Non-Backeye Camera



CAMERA ACCESSORIES

IN-LINE CAMERA ADAPTER PIN KIT

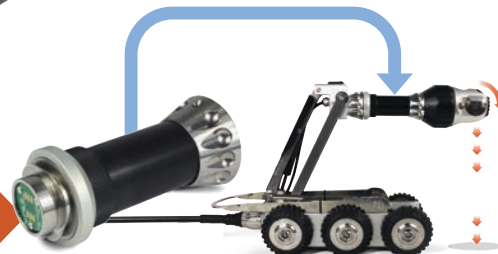
BAK01 adapter guides are invaluable for vertical inspections. The robust arms keep the camera centered in the pipe and help prevent damage to the camera and adaptor. Kit Includes 2 sizes



IN-LINE CAMERA ADAPTER

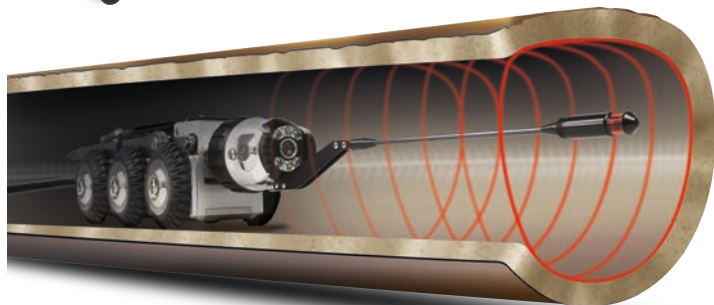
- Effective tool for vertical inspections in manholes, chimneys, tanks and vessels.
- **PCA01** connects a camera to your control unit without the need for a crawler.

CAMERA EXTENDER CCCE01



LASER PROFILER LAS-PRO

- For pipes 4 - 18"
- Compatible with Proteus CAM026, CAM026L & CAM028L
- Ideal for measuring pipe diameters continuously along the length of the pipe
- Verification of ovality
- Cross-sectional area calculations for determining flow reduction
- Erosion identification



Proteus Lite

CCU208
Control Unit

WIFI ENABLED

GREAT VALUE

ALL-IN-ONE SYSTEM

UPGRADEABLE

BATTERY PACK

CAM026
Pan & Rotate
Camera

CPL150 Crawler

CABLE
LENGTH
820'

RMPL250 Reel

➤ INNOVATIVE
ALL-IN-ONE SYSTEM

➤ SELF-CONTAINED

➤ MODULAR



1 SET OF FUNCTIONS, 2 DESIGNS

PORTABLE ↔ DESKTOP

PORTABLE UNIT
CCU208

WIFI ENABLED



LITHIUM ION BATTERY



DAYLIGHT READABLE

ProPIPE+
REPORTING SOFTWARE



VAN BUILD
VCU500

Feature-rich, the CCU208 Control Unit has twin joysticks for camera control, crawler maneuverability, and an ergonomic soft-touch keypad. User friendly hot keys control an intuitive on-screen display, enabling quick and accurate navigation of the extensive features that come standard on this versatile controller.



VERSATILE PUSH RODS

STRAIGHT VIEW AND PAN & TILT INSPECTIONS

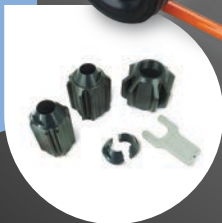
ROLLER SKIDS

- Roller skids expand the system for use in 6"-12" pipes, enabling use in pipelines that would otherwise require a crawler system
- Available in 2 sizes to fit CAM025 and CAM026



CENTERING SKIDS

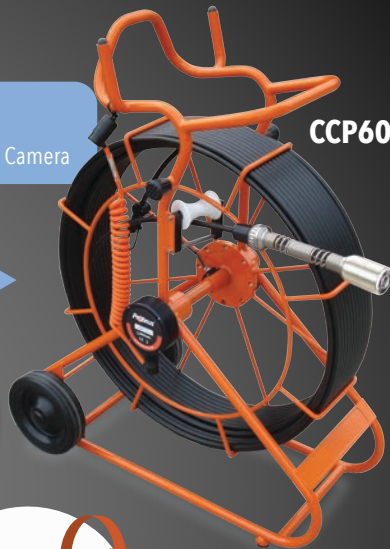
- Centering skids optimize your view in pipes 3"+
- Comes with a set of 3 skids and a removal tool



STRAIGHT VIEW

Push rod compatible with **CAM025** Axial Camera

CCP60R



AVAILABLE
IN CABLE
LENGTHS:
200' AND 325'



PAN & TILT

Push rod with **CAM026** adaptor for pan & tilt push camera inspections

CCP60D



CABLE REELS

MANUAL



RMPL250
Weight: 55 lbs

RMP300
Length: 1150'
Weight: 77 lbs

CABLE HIGHLIGHTS

- 6 pin Kevlar reinforced
- Easy retermination
- Compact and ergonomic

MOTORIZED



RAP250
Length: 820'
Weight: 67 lbs

RAP350
Length: 1150'
Weight: 89 lbs

RAP350

- Compact, portable, easy to use
- Powerful, three-phase motor with level wind designed for uninterrupted, tangle free operation

AUTOMATIC

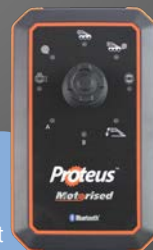
ACR500

Automatic Cable Reel
Cable length: 1640'
Weight: 120 lbs



ACR350

Automatic Cable Reel
Cable length: 1150'
Weight: 100 lbs



JOYSTICK REMOTE CONTROL RJP

Control pay in/out with the cable, adjust the lift and LEDs without the controller

REMOTE CONTROL

Optional handheld 4 button, Bluetooth® remote operation of reels and crawler movement



ACCESSORIES

PTP01

PORTABLE STORAGE TROLLEY

COMPLETE MOBILITY FOR YOUR PROTEUS SYSTEM

- Eliminates hazardous lifting and carrying to your remote work site
- Securely holds everything you need to efficiently undertake your pipeline inspection



EWP01

WEIGHT PLATE

ACCESSORY FOR EXTREME PIPE CONDITIONS

- Compatible with the Proteus CRP140 and CPL150
- At 5.5 lb., the weight plate is quick and easy to attach

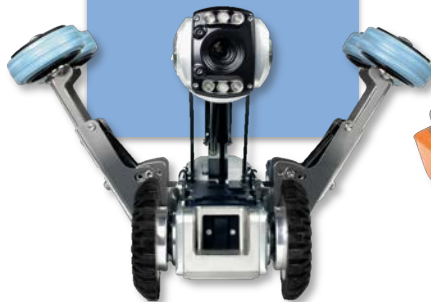


BEP300
BEP150

EGG STABILIZER

EXTRA SUPPORT FOR OVAL PIPE INSPECTIONS

- A quick fit to Proteus crawlers designed to stabilize in egg-shaped pipes
- Fits Proteus CRP300, CPL150 and CRP140

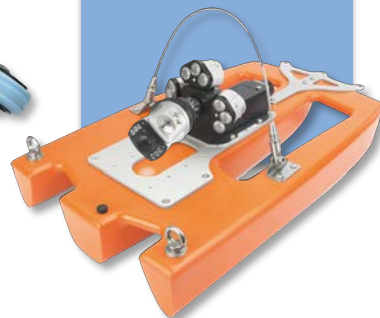


FRP01

FLOATATION RAFT

PIPE INSPECTION IN FLOWING WATER JUST GOT EASIER!

- Eliminates the need for man-entry
- Auxiliary LED ultra-bright light modules sized for high lines 36" and up
- Fits in all standard manholes



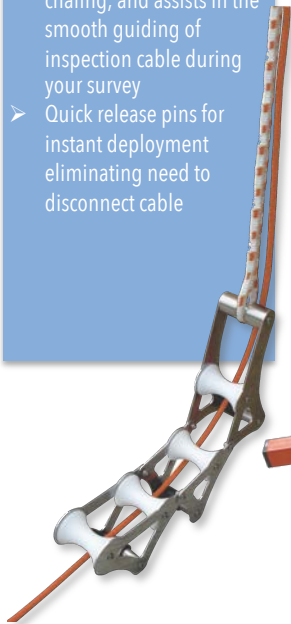
ACCESSORIES

CABLE GUIDE PULLEY

CGP01

FOR CABLE PROTECTION AND EASY SET-UP

- Reduces wear by preventing kinks and chafing, and assists in the smooth guiding of inspection cable during your survey
- Quick release pins for instant deployment eliminating need to disconnect cable

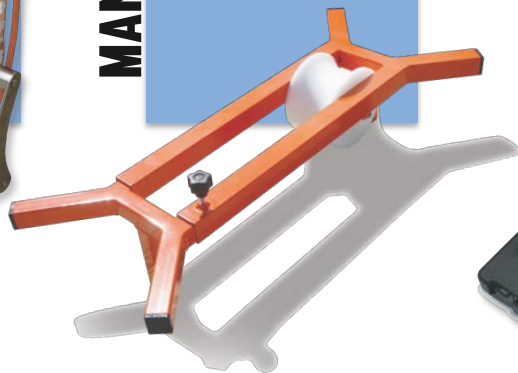


MANHOLE TOP ROLLER

TRP01

FOR SMOOTH GUIDING OF INSPECTION CABLE

- Assists in smooth guiding of inspection cable while reducing friction and increasing cable life
- Fully adjustable to fit most manhole sizes



PRESSURE KIT

PKP01

ALL YOU NEED TO PRESSURIZE A PROTEUS SYSTEM

- Supplied in a padded case
- Pressurization is quick and easy
- Non-proprietary replacement cannister



PROTEUS POWER

BPP24

PORTABLE POWER... WHERE WILL IT TAKE YOU?

- Ideal for remote stand-alone inspections providing 5 hours of battery life.
- Rugged, quick and easy to connect.
- Charger station and battery bag sold separately



THE CUBE



OFF ROAD INSPECTIONS

Access remote
areas with a pick-
up truck or ATV

FEATURES

- Weatherproof enclosure with welded aluminum construction
- Swing-up hood shields operator
- Blinders and flat interior reduce glare
- Shelving holds video and crawler gear
- Total weight is less than 800 lbs with all equipment
- Heavy duty lifting eyelets
- Fork skids facilitate installation
- Washdown helps with cleanup
- 2000 watt generator housing



VAN BUILDS



EXTERIOR

- LED Directional Traffic Advisory
- 6 Marker Strobes on Chassis

POWER SOURCES

- 3000 Watt Go-Power Inverter
- Optional Diesel Generator

OFFICE SPACE FEATURES

- Non-slip Flooring
- Covered and Insulated Walls & Ceiling
- Interior Partition Wall with Observation Window
- Control Room Countertop Workstation
- Aluminum File Cabinet with Storage
- LED Ceiling Mounted lights (2)
- 110V Electrical Receptacle Outlets
- 12V Receptacle / Charger



**RENTALS
AVAILABLE**

REAR WORK AREA

- LED Ceiling Mounted Lights
- 110V Electrical Receptacle Outlets
- 48" Counter Top - Curbside
- 48" Aluminum Base Cabinet -Curbside
- 24" Butcher Block Counter Top
- 7 Gallon Wash Down Tank w/Pump
- Rear Flood Light
- Rear Backup Camera
- Rear Crawler Monitor



CONTACT US

(717) 737-7162

contact@sweeperland.com

4713 Gettysburg Rd.

Mechanicsburg, PA 17055

www.BortekPWX.com

