



## **GLOBAL M4 CNG**

### **Alternative Fuel** **COMPRESSED NATURAL GAS**

- ▶ 18.5' Turning Radius
- ▶ Cab Over Design with Unmatched Visibility
- ▶ Large 47" Gutterbrooms Designed to Clean the Curb
- ▶ High Performance Sweeping Package
- ▶ Unmatched Access to Engine and Sweeping Components
- ▶ Largest in class; 5.6 Cubic Yard Hopper with Access Door
- ▶ Lots of Power with Excellent Fuel Efficiency



# GLOBAL M4 CNG

## THE ULTIMATE CNG POWERED MECHANICAL STREET SWEEPER

From the modern, comfortable and well appointed operator's cab, to the toughest and most rugged mechanical sweeping system ever built, the **M4 CNG** and **M4HSD CNG** is designed to take on the worst of the worst sweeping conditions. Global Sweepers will outperform in daily sweeping conditions such as heavy sweeping and leaf pick up.

With a Standard Heavy Duty Sweeping Package, **Global M4 CNG** sweepers will sweep sand, gravel up to **3-Tons per Minute**. The sweeping speed of 3 - 11 mph allows for a very efficient operation.

The compact design, exceptional maneuverability (**18.5' Turning Radius**), perfect for any cul-de-sac, and superb visibility make this a perfect choice for any municipal/governmental agency that is looking for a street sweeper that can simply fit and reduces travel time.

### Global M4 CNG Standard Equipment

- Air Conditioned and Pressurized Cab
- In-Cab Gutterbroom Pressure Adjustment
- Rear View Camera and LCD Monitor
- Leaf Gate System
- Heavy Sweep Package
- Hopper Access Door

### Global M4CNG Options

- 100% Stainless Steel Hopper
- In-Cab Gutterbroom Tilt
- In-Cab Gutterbroom Speed Control
- AM/FM/CD Stereo with AUX/USB Port and BlueTooth
- Air-Ride Seat
- Elevator and Hopper Wash-Out
- Automatic Greasing System
- (SCAQMD) PM-10 Water System
- Power and Heated Mirrors



## THE BEST PURPOSE-BUILT SWEEPER IN THE INDUSTRY

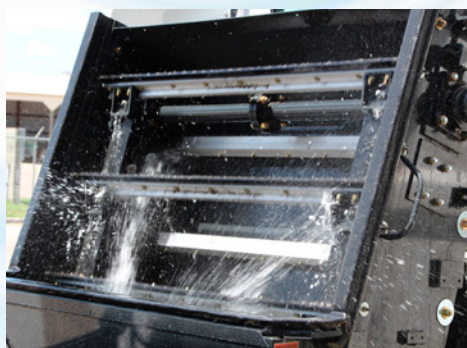
### THE BEST PURPOSE-BUILT SWEEPER IN THE INDUSTRY

The inherent design of the **Global M4 CNG** makes it the logical choice among 4-wheel mechanical sweepers. With the center mounted/cab forward layout the operator has unsurpassed visibility of the road surface as well as pedestrians and surrounding traffic. The large hopper capacity equals more lane miles swept between dump cycles and the **18.5 foot turning radius** makes the **Global M4 CNG** highly efficient and comfortable.



The **Global M4 CNG** offers the best maneuverability in its class with its tight turning radius allowing the operator to maneuver easily in cul-de-sacs and close quarters.

**LONG LASTING Polyurethane Dirt Shoes** are designed so that operator can sweep over potholes and rail road tracks and will not damage while sweeping. **Long Life of 1000 hours** is guaranteed. **47" Gutterbrooms** assist in cleaning curbs and heavy Road Millings.



**HEAVY SWEEP PACKAGE** Elevator Type: Standard 11 Flight squeegee with replaceable corded rubber tips; Continuous molded rubber belts combine with standard Heavy Sweep Package make **Global M4 CNG** the logical choice for sweeping heavy debris such as road millings, sand and gravel up to **3-tons per-minute**. That is one ton of sand every 20 seconds! Standard leaf gate system assists in picking up large debris, bottles, large branches and leaves.

**DUST SUPPRESSION SYSTEM** • **Global M4 CNG** includes **250-280 Gallon Water Tank Capacity** combined with Two(2) Diaphragm Water pumps and Two(2) Modes (LOW/HIGH) provide versatility and superb dust control.



**LARGEST HOPPER IN IT'S CLASS** **Global M4 CNG** includes a **5.6 cu/yd hopper capacity** compared to 4.5 cu/yd for competitive machines resulting in more curb miles swept between dump cycles. With near Full Useable Capacity, 12,000 Lift Capacity, and the Optional Elevator and Hopper Wash Out System, **Global M4 CNG is Affordable, Reliable and Innovative.**

# GLOBAL M4 CNG

## THE BEST PURPOSE-BUILT SWEEPER IN THE INDUSTRY



**Global M4** is offered in two versions. **Global M4** is designed to be a rear dump sweeper with easy access to all the engine components. The **Global M4HSD** (High Side Dump) includes the side dump hopper design that allows to dump to any truck. **All designed to meet your expectations.**

### SIZE & CAPACITY

3 Tanks, 21.1" dia. X 60" long. Diesel equivalent capacity at 3,600 psi.

**63.3 Gallons Total**  
3 x 21 gal. per tank

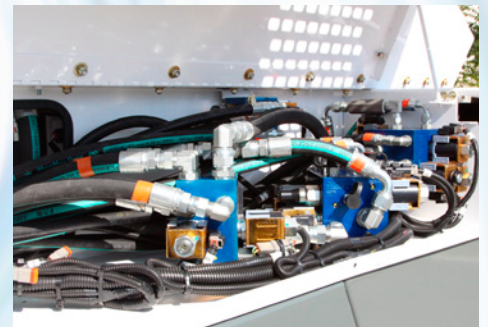
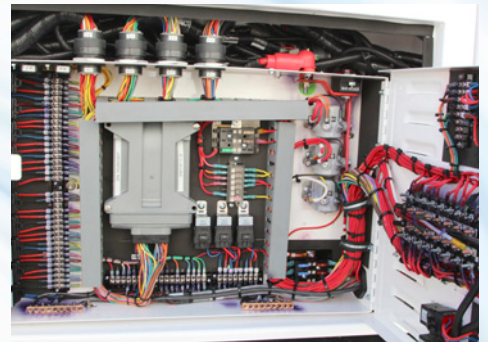
Fuel System and Control Panel -Stainless Steel Seal-lok Fittings & Tubes -Stainless steel devises w/O-ring fitting

- Weight Savings of up to 70% over steel tanks
- Service Life of 20 years with superior fatigue life
- Corrosion Resistant



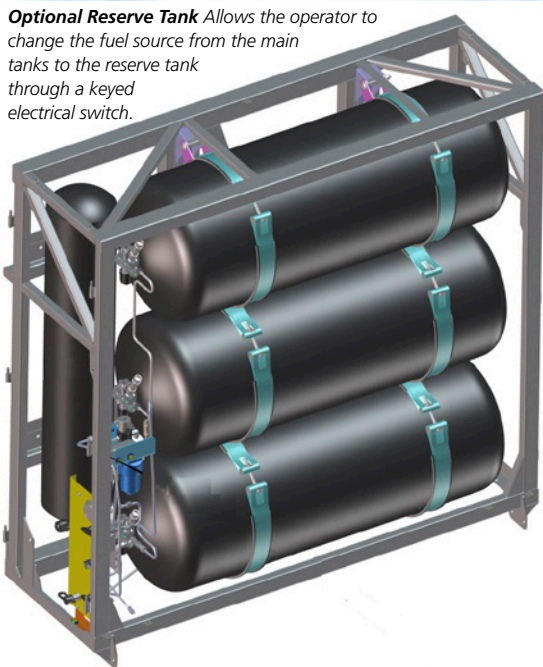
**ACCESS IT ALL** The **Global M4 CNG** features many maintenance-friendly attributes, such as a rear swing-out radiator, easy access front mounted AC condenser, brake and windshield washer fluid reservoirs, and cab fresh air filter.

**EASY TROUBLESHOOTING** A centralized, weatherproof systems fully protects electrical components from the elements while it allows maintenance staff easy accessibility for inspection and troubleshooting.



**IT'S ALL IN THE OPEN** Hydraulic Hoses are NOT hidden in the frame of the sweeper, while all Manifolds and Filters are located in a central location.

**SINGLE ENGINE DESIGN REDUCES MAINTENANCE COSTS** Single engine design delivers outstanding performance by a fuel-efficient, turbo charged 8.9L Cummins ISLG 250 horsepower CNG Engine. Meets 2019 Emission Standards as well as 2019 EPA and US DOT fuel economy and green house gasses regulations.



**Optional Reserve Tank** Allows the operator to change the fuel source from the main tanks to the reserve tank through a keyed electrical switch.



**Composite CNG Tanks** meet the requirements of ANSICCS Ar NGV2. USDOT FMVSS304



# GLOBAL M4CNG

**Global Environmental Products Inc.** offers equipment with uncompromising performance, consistent quality, durability and reliability. Our comprehensive range of machines provide the right cleaning equipment for your application. Please contact us for a demonstration at (800) 626-7835

- ▶ Reliable / Durable Equipment
- ▶ Innovative Engineering / Design
- ▶ Industry Leading Reputation
- ▶ Dedicated Customer Service
- ▶ Outstanding Sales Professionals
- ▶ Fast Parts and Service
- ▶ National Dealer Network

[www.SWEEPERLAND.COM](http://www.SWEEPERLAND.COM)

MADE IN THE USA 



*Sold and Serviced by:*

A FAMILY COMPANY SINCE 1967



**Bortek Industries Inc.**

4713 Gettysburg Road

Mechanicsburg, PA 17055

800-626-7835

[info@sweeperland.com](mailto:info@sweeperland.com)

