

# AQUATECH<sup>®</sup>

A PRODUCT OF HI-VAC<sup>®</sup> CORPORATION



117 Industry Road, Marietta, Ohio, 45750 | **Tel:** 740.374.2306 | **Fax:** 740.374.5447

[www.aquatechinc.com](http://www.aquatechinc.com)



# THE AQUATECH<sup>®</sup> FAMILY OF PRODUCTS

## COMBO HYDRO

Perfect for cold weather operations, the Combo Hydro effectively hydro excavates and cleans out sewers. This full-capacity sewer cleaner includes a complete, full-sized, heated enclosure for the water pump and the hydro reel. Water Pump sizes range from 50–100 GPM at pressures up to 2,500 psi. The Combo Hydro is available with 6, 10, or 15 yd<sup>3</sup> debris tank capacity. The Combo Hydro is designed with Front or Rear Boom Storage.



## WATER JETTER SJR SERIES

Efficiently removes bottles, cans, grease, sludge and other debris from sanitary and storm sewer lines. The SJR is engineered with a 1,500–2,500 gallon water capacity, 50–100 GPM water pumps, and a versatile rear reel design. The rounded water tank carries a lifetime warranty.



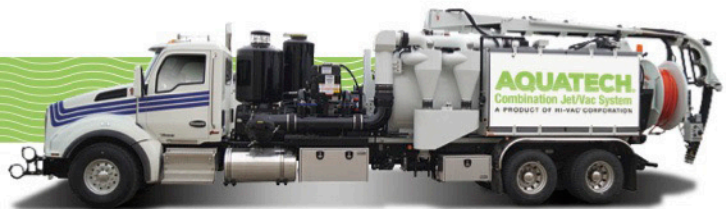
## CATCH BASIN CLEANER CB SERIES

Perfect for applications where jetting is not required, the CB series is ideal for all municipal vacuum applications. The CB Series is available with a 6, 10, or 15 yd<sup>3</sup> debris body capacity.



## JUMBO COMBO

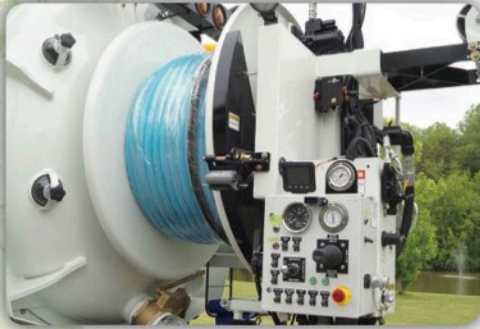
The Jumbo Combo is perfect for large diameter pipe cleaning jobs where smaller water pumps and vacuum systems will not be able to complete the task at hand. The Jumbo Combo is designed with a 5,250 CFM 27" Hg blower and large capacity 120 or 150 GPM water pumps.





# AQUATECH® B SERIES

## REAR-MOUNTED HOSE REEL



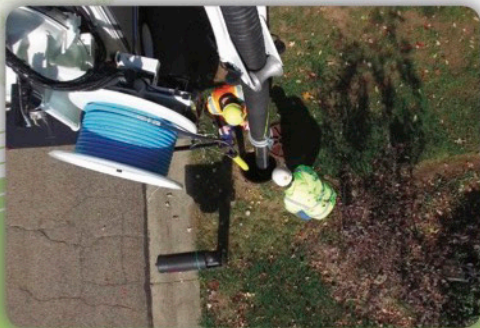
### Rear-Mounted Reel

- Increased Versatility
- Ergonomic Control Station
- 180° Hydraulic Articulation



### Extended Reel Reach

- Can Work Beyond the Truck's Width
- 12' Work Radius with Boom and Reel



### Quietest Full-Size Sewer Cleaner in the Industry

- Less Noise, Less Heat, Less Vibration
- Easy, Fast Set-Up



### 360° Top-Loading Boom

- Vacuum From Any Location Around Unit
- One-Piece Vacuum Hose: Less Wear, Decreased Parts Replacement



# FEATURES

## COMMON TO ALL AQUATECH® COMBINATION JET/VAC UNITS



### High Performance 27" Hg Blower

- The Most Powerful Vacuum in the Industry
- Faster, More Productive Vacuum Loading



### Horizontal Transfer Case Drive

- Powerful, Simple, Reliable
- Water Pump, Vacuum Blower On/Off at Operation Station



### Multiple Capacities

- Debris Tank Sizes Range from 6-15 yd<sup>3</sup>
- Water Tank Sizes Range from 570-1,750-Gallon Capacity



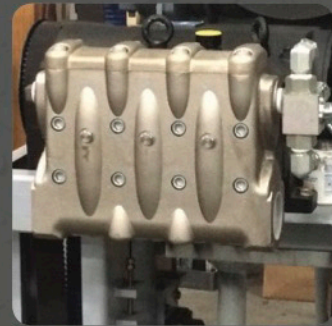
### Super Tough Poly Graphite Water Tanks

- Carry a lifetime warranty
- Location Protects Tanks from Road Hazards



### Full-Size Hydraulic Rear Door

- Debris Tanks Carry a Lifetime Warranty
- Hydraulic Locks with Hydraulic Open/Close



### Up to 150 GPM Water Pump Capacity

- Triplex Pump Design
- Smooth, Constant, Hydraulic Pressure
- Five-Year Warranty



# AQUATECH®





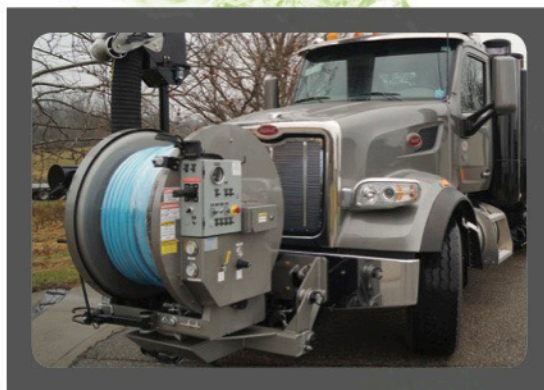
# AQUATECH® F SERIES

## FRONT-MOUNTED HOSE REEL



### Front-Mounted Reel

- 320° Hose Reel Rotation
- No Support Leg Required



### No View Obstruction

- Front Bumper Location
- 800' Hose Capacity
- Ergonomic Control Station



### Front-Loading Design

- Vacuum From Any Location Around Unit
- Vacuum Hose Never Binds



### 360° Rotating Boom

- Smooth, Powerful Gear Motor Rotation
- One-Piece Vacuum Hose Means Decreased Parts Replacement





# AQUATECH®

A PRODUCT OF HI-VAC® CORPORATION

